



#### **Diamond riviére necklace**

£26,000

one hundred and twenty nine round brilliant cut diamonds all four claw set to white mount, box and tongue clasp with safety bar

Average dimensions - one hundred and twenty two graduated from 2.6mm to 3.9mm diameter; two at 4.15mm; two at 4.8mm; two at 5.5mm; one at 6mm diameter

Estimated total weight - 15cts

Assessed colour - H/I/J (mixture)

Assessed clarity - SI/Pique

Details of Mounting:

Hallmarked - Unhallmarked, stamped '14k', valued untested as 14k gold

Overall dimensions - 410mm long

Gross weight - 29.4 grammes

#### **PROVENANCE**

Joyeria Sai, Puerto Banús, Marbella, Spain

(New Replacement Value)



**Additional Image**



#### **Emerald cut diamond ring**

£16,500

four claw set with a baguette cut diamond to each shoulder, to white precious metal shank, valued as platinum, diamond dimensions 10.69mm by 7.15mm by 3.99mm, estimated central diamond weight 2.62cts approximately

Assessed colour - K/L

Assessed clarity - SI

Estimated remaining total diamond weight - 0.25cts (2)

Stamped 'PLAT'

5.5 grammes

(New Replacement Value)



#### **Diamond line bracelet**

£16,000

the forty two round brilliant cut diamonds all four claw set to white mount, box an tongue clasp with safety bar

Average dimensions - forty two graduated from 3.9-4mm diameter

Estimated total weight - 10.3cts

Assessed colour - H/I/J (mixture)

Assessed clarity - SI/Pique

#### **Details of Mounting:**

Hallmarked - Unhallmarked, stamped '14k', valued untested as 14k gold

Overall dimensions - 190mm long

Gross weight - 21.8 grammes

#### **PROVENANCE**

Joyeria Sai, Puerto Banús, Marbella, Spain

(New Replacement Value)



#### **Single stone diamond ring**

£10,500

central claw set round brilliant cut diamond with baguette cut diamond to either shoulder, to a white precious metal shank, valued as platinum and white gold, estimated central diamond weight 1.1cts approximately

Assessed colour - H/I

Assessed clarity - VS/SI

Stamped 'Plat 18ct'

3.3 grammes

(New Replacement Value)



#### **Three stone diamond ring**

£10,000

central claw set round brilliant cut diamond with a smaller round brilliant cut to either side, to a white precious metal scroll gallery and shank, valued as platinum, centre stone dimensions 6mm by 3.3mm, estimated central diamond weight 0.72cts, the remaining diamonds 1.2cts total carat weight approximately

Assessed colour - H/I

Assessed clarity - VS

Stamped 'Plat'

3.5 grammes

(New Replacement Value)



#### **Single stone diamond ring**

£7,700

pear shape diamond to white gold claws and 18ct yellow gold shank, diamond dimensions 11mm by 6.5 by 4.2mm approximately, estimated total diamond weight 1.8cts approximately

Assessed colour - K/L

Assessed clarity - SI2-Pique

Hallmarks for London 1986, sponsor's mark H.Ltd

3.1 grammes

(New Replacement Value)



#### **Sapphire, pink sapphire and diamond crossover ring**

£6,000

scrolling band pave part pave set with twenty nine round brilliant cut diamond meelees, and a heart shape ruby and sapphire, claw set to white precious metal shank, valued as gold

Pink Sapphire dimensions - 7.8 x 6.5 x 3.9mm,

Estimated total weight - 1.7cts

Blue sapphire dimensions - 7.8 x 6.7 x 4.88mm

Estimated total weight - 2.14cts

Estimated total diamond weight - 0.4cts

Stamped '750' and '1961'

8 grammes

(New Replacement Value)



#### Emerald and diamond cluster ring

£5,100

central square step cut emerald within a border of twelve shared claw set round brilliant cut diamonds, to white precious metal mount, valued as gold, emerald dimensions 8.58mm by 6.88mm by 4.46mm, estimated total emerald weight 1.8cts, approximately, estimated total diamond weight 1.2cts approximately  
Stamped '18ct'  
4.4 grammes  
(emerald good mid colour, transparent but included throughout rising to the surface)

(New Replacement Value)



#### Aggregate value for the following items:

£5,000

Pair of diamond ear studs, each composed of a Princess cut diamond and five diamond melee to yellow gold mounts, peg and butterfly fittings, 2 grammes gross  
Estimated total diamond weight - 0.44cts

Pendant necklace en suite, the square pendant set with a Princess cut diamond and five round brilliant cut diamonds, to 18ct yellow gold, loop suspension, and a fancy link chain, pendant hallmarked, rubbed, chain stamped 750, 13.3 grammes  
Estimated total diamond weight 0.55cts

(New Replacement Value)



#### 18ct yellow and white gold diamond pave set two row wave necklace

£5,000

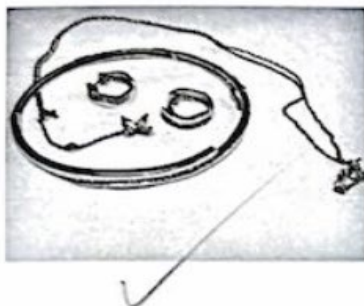
estimated total diamond weight 2.15cts approximately, 18ct convention marks, stamped 750 and sponsor's mark SBL  
69.4 grammes

#### PROVENANCE

Steven Stone Jewellers, Manchester

(New Replacement Value)





**Aggregate value for the following items:**

**£4,900**

Diamond hinged bangle, 9ct white gold mount, nineteen round brilliant cut diamond meleees, 1.8mm diameter, 10.1 grammes  
Estimated total diamond weight - 0.2cts

Pendant 'Victoria' drop pendant, with four marquise diamonds, by Tiffany & Co, trace link chain, 3.1 grammes  
Estimated total diamond weight - 0.4cts

Pair of hinged half hoop earrings, set with diamond meleees, stamped 375, 3 grammes  
Estimated total diamond weight 0.18cts

(New Replacement Value)



**Tanzanite and diamond cluster ring**

**£2,400**

oval cut central tanzanite within a border of twelve round brilliant cut diamonds, all claw set to an 18ct white gold shank, tanzanite dimensions 9mm by 7mm by 4.72mm, estimated total tanzanite weight 2.02cts approximately, estimated total diamond weight 0.6cts approximately  
Hallmarked Birmingham 1977  
5.8 grammes

(New Replacement Value)



**Aggregate value for the following items:**

**£4,700**

Cultured pearl necklace, composed of cream and silver tone pearls, 5.5mm to 6.5mm diameter, set with diamante spacers, and diamond pave set pear shape pendant with diamond pave set wishbone shape surmount with white precious metal trigger clasp, stamped 750, 395mm long

Single strand cultured pearl necklace, with 6.5mm diameter cream and silver tone pearls, with diamante spacers and white metal trigger clasp, 650mm long

Another to match, 480mm long

Another to match, without diamante spacers, 360mm long

Pair of earrings to match, each composed of a 7.5mm cream and a silver tone cultured pearl with central diamante spacers, peg and butterfly fittings, 25mm drop

(New Replacement Value)



**Pair of diamond line ear pendants**

£4,700

each earring composed of seven round brilliant cut diamonds four claw set to a white mount, peg and butterfly fittings

Average dimensions - 14 at 3.5mm diameter

Estimated total weight - 2.5cts

Assessed colour - H/I

Assessed clarity - VS/SI

Details of Mounting:

Hallmarked - Unhallmarked, stamped '14k Arya', valued untested as 14k gold

Overall dimensions - 35mm drop

Gross weight - 5.7 grammes

(New Replacement Value)



**Triple row cultured pearl necklace**

£4,200

composed of two hundred and ninety 6.5mm diameter light cream pearls, pink overtones, good lustre and surface purity, with twenty seven paste set spacers, and an oval clasp set with smaller half pearls and central pearl to 9k yellow gold  
690mm long

(New Replacement Value)

Reference: 15



**Ruby and diamond three stone ring**

£4,100

central oval ruby with a round brilliant cut diamond to either side claw set in white gold, the ruby claw set in yellow gold, 18ct yellow gold shank, ruby dimensions 7.6mm by 5.2mm by 3.4mm approximately, estimated total ruby weight 1.1cts approximately, estimated total diamond weight 0.74cts approximately  
Hallmarks for London 1980, stamped 5246  
3.6 grammes

(New Replacement Value)



**Pair of mabe pearl and diamond ear clips**

£4,000

each with a central 14mm diameter mabe pearl within a border of twenty six various sized round brilliant cut diamonds to 14ct yellow gold mounts, with screw back fittings, estimated total diamond weight 1.7cts approximately, 20mm diameter Hallmarked 14ct, Birmingham 1991  
12.7 grammes gross

(New Replacement Value)

Reference: 17



**Diamond hinged bangle**

£4,000

shared claw set to one side with round brilliant cut diamonds of pierced scroll design, to unmarked yellow precious metal mount, valued as 18k gold, estimated total diamond weight 1.74cts approximately  
Assessed colour - G/H  
Assessed clarity - VS  
18.3 grammes

(New Replacement Value)



**Aggregate value for the following items:**

£3,800

Peridot and diamond cluster ring, oval cut central peridot within a border of sixteen eight-cut diamonds claw set in white precious metal, pierced shoulder shank in 18ct yellow gold, peridot dimensions 10mm by 8mm by 4.88mm, estimated total diamond weight 0.32cts approximately, hallmarked Birmingham 1982, sponsor's mark S&Co, 5.9 grammes

Similarly set citrine and diamond cluster ring, citrine dimensions 10mm by 7.9mm by 5.3mm, estimated total diamond weight 0.48cts approximately, hallmarked Birmingham 1980, sponsor's mark S&Co, 6.1 grammes

(New Replacement Value)



**Aggregate value for the following items:**

**£3,700**

Pendant necklace, oval openwork foliate design, set with eight eight-cut diamond meleees, white and yellow gold mount in 9ct gold, 925 standard serpentine chain, pendant 28mm long

Pair of earrings en suite, all hallmarked Birmingham 1983, 20mm long, 5 grammes gross

Pendant necklace, scroll design with seventeen brilliant cut diamond meleees and a single collet set 3mm diameter pink sapphire to 18k white gold with trace link chain, import marks, 38mm drop 3.8 grammes

Pair of earrings en suite, 4.8 grammes

(New Replacement Value)



**Collection of necklaces and bracelets, including:-**

**£3,600**

Lapis lazuli and cultured pearl necklace, with diamante spacers, 6mm diameter pearls, 500mm long

Another to match, but with imitation pearls, 680mm long

Another similar with imitation pearls and malachite beads, 680mm long

Another two necklaces, but with 6mm diameter cultured pearls and malachite beads, 365mm long and 500mm long

Bracelet with imitation pearls and malachite beads, 150mm long

Three garnet and cultured pearl necklaces, the 6mm diameter pearls, with diamante spacers, 380mm, 500mm and 660mm long

Bracelet with garnet and imitation pearls, with a garnet and seed pearl clasp, to 9ct yellow gold 170mm long

Faceted yellow bead and cultured pearl necklace, 380mm long

Imitation pearl and faceted yellow bead bracelet to match, 160mm long

(New Replacement Value)





**Pink sapphire and diamond bracelet**

£3,500

composed of nine diamond pave set rectangular open links and nine curved bar links each channel set with six square cut pink sapphires, white precious metal, estimated total diamond weight 1.2cts approximately, 170mm long  
Stamped 750  
17.7 grammes

(New Replacement Value)



**Collection of various unspecified earrings**  
(nothing of singular value over £400)

£3,000

(New Replacement Value)

Reference: 23



**Additional Image**



**Twin row cultured pearl necklace**

£3,000

one hundred and twenty eight 6-7mm diameter slightly graduated off-round and drop shape pearls, light cream, some with pink overtones, good lustre with minor spotting to some, with eight paste set roundel spacers and a rectangular clasp set with twenty six round brilliant cut diamond meleees, yellow gold  
Estimated total diamond weight - 0.7cts  
470mm long

(New Replacement Value)



**Diamond five stone ring**

set to a grooved 18ct yellow gold 'D' shape shank, estimated total diamond weight 0.9cts approximately  
Hallmarked London 1993, sponsor's mark CRF  
2.9 grammes  
(one diamond slightly loose)

(New Replacement Value)

£2,900



**Aggregate value for the following items:**

Two single row 5.8mm diameter cultured pearl necklaces, each with four paste set spacers, and yellow gold clasps, 450mm long and 340mm long

Double row cultured pearl necklace, one hundred and twenty 5.5mm diameter pearls with eight paste set spacers, and a 9k yellow gold clasp centred by a pearl

(all light cream, off-round, pink overtones, medium to good lustre and surface purity)

(New Replacement Value)

£2,900



**Aggregate value for the following items:**

Three strand cultured pearl and coral bead necklace, pearls from 3mm to 7mm diameter, with seed pearl pave set 9ct yellow gold clasp, 540mm long

Single strand red coral graduated bead necklace, yellow precious metal clasp, 500mm long

Two turquoise matrix and cultured pearl necklaces with gilt metal ball spacers, 370mm and 640mm long

Carved cornelian and cultured pearl necklace, with glass bead spacers and yellow gold ring clasp, 590mm long

Miscellaneous other bead or pearl necklaces

(New Replacement Value)

£2,800



**Pair of mabe pearl and diamond brooches**

**£2,700**

each centred by a 19mm diameter mabe pearl within an openwork foliate border claw set with four round brilliant cut diamonds, 9ct yellow gold mounts, estimated total diamond weight 0.64cts approximately, hallmarked London 1988, sponsor's mark DM, 32mm diameter  
19 grammes gross

(New Replacement Value)



**Aggregate value for the following items:**

**£2,600**

Imitation pearl and amethyst necklace, with diamante spacers, yellow gold clasp, stamped 375, 660mm long

Amethyst and cultured pearl necklace, with yellow precious metal spherical spacers and diamante spacers, pearls 4.5mm diameter, with 9ct yellow gold clasp centred by a pearl, 500mm long

Another to match, 360mm long

Bracelet with imitation pearls and amethyst beads, yellow precious metal clasp stamped 375, 170mm long

Amethyst and seed pearl pendant, of lozenge outline, set with oval faceted amethysts and a drop, and seed pearls, to 9ct yellow gold mount hallmarked London 1979, 5.9 grammes

Pair of amethyst and cultured pearl earrings, yellow precious metal mounts, 4.2 grammes gross

Three imitation pearl and black onyx bead necklaces, in graduated lengths, and a bracelet en suite, with pair of earrings, all with diamante spacers

(New Replacement Value)



**Cultured pearl demi parure, with 9ct yellow gold mounts, including:-**

**£2,500**

Grape vine design brooch, 4mm diameter pearls, 7.8 grammes

Earrings en suite, 2.5 grammes gross

Necklace, 400mm long, 3.5mm diameter pearls, 15 grammes

(New Replacement Value)





#### Red spinel and diamond ring

£2,400

central square step cut spinel within a border of twelve round brilliant cut diamonds to square panel claw setting to white precious metal mount, valued as gold, spinel dimensions 5.8mm by 5.7mm by 3.94mm approximately, estimated total spinel weight 1.08cts approximately, estimated total diamond weight 0.6cts approximately  
Stamped '18ct'  
5.5 grammes

(New Replacement Value)



#### Diamond half eternity ring

£2,400

seven round brilliant cut diamonds claw set to a white precious metal mount, valued as gold, estimated total diamond weight 0.8cts approximately, largest diamond 0.16cts approximately  
Stamped '18ct'  
3.8 grammes

(New Replacement Value)



#### Tanzanite and diamond cluster ring

£2,400

oval cut central tanzanite within a border of twelve round brilliant cut diamonds, all claw set to an 18ct white gold shank, tanzanite dimensions 9mm by 7mm by 4.72mm, estimated total tanzanite weight 2.02cts approximately, estimated total diamond weight 0.6cts approximately  
Hallmarked Birmingham 1977  
5.8 grammes

(New Replacement Value)



#### Aggregate value for the following items:

£2,300

Pink coral and cultured pearl two strand necklace, with gilt metal spacers, and pink coral heart shape clasp within a border of 4mm diameter pearls, 9ct yellow gold clasp, pearls 8mm by 7mm, 610mm long, hallmarked London 1983, sponsor's mark AJ

Similar single strand necklace, irregular 6.5mm cultured pearls, clasp stamped 585, 370mm long

Modern Italian shell cameo brooch, attached to an onyx bead necklace, 520mm long

Miscellaneous other bead necklaces





#### **Triple row cultured pearl necklace**

£2,300

one hundred and seventy eight 6-6.5 mm diameter light cream pearls, round to off-round, medium lustre with minor spotting, with a daisy head yellow gold clasp centred by a 6.5mm cultured pearl

Clasp stamped '14ct'

395mm long

(New Replacement Value)



#### **Diamond and yellow beryl ring**

£2,200

oval cut beryl with three round brilliant cut diamonds to either side, the diamonds claw set in white precious metal, remaining in 18ct yellow gold, yellow beryl dimensions 12.1 by 9.2 by 6.2mm, estimated total diamond weight 0.57cts approximately

5.3 grammes

(New Replacement Value)

Reference: 36



#### **Citrine and diamond cluster ring**

£2,000

rectangular emerald cut citrine set within a border of fourteen round brilliant cut diamonds, with three round brilliant cut diamonds to each of the millegrain shoulders, platinum mount, citrine dimensions 9mm by 7.2mm by 4.8mm, estimated total diamond weight 0.45cts approximately

Platinum hallmarks for 1984, sponsor's mark S&C

5.2 grammes

(New Replacement Value)



#### **Aquamarine and diamond ring**

£2,000

marquise cut aquamarine claw set in white precious metal with a round brilliant cut diamond to the illusion set shoulders, yellow precious metal shank, valued as gold, aquamarine dimensions 19mm by 9mm by 6.3mm, estimated total diamond weight 0.1cts approximately

Stamped 18ct

4.7 grammes

(New Replacement Value)



#### **Diamond and topaz cluster ring**

£1,900

oval cut champagne coloured topaz within a border of sixteen eight-cut diamonds claw set in white precious metal, pierced shoulder 'D' shape shank in 18ct yellow gold, topaz dimensions 10mm by 8mm by 6.7mm approximately, estimated total diamond weight 0.48cts approximately  
Hallmarked Birmingham 1989, sponsor's mark S & Co  
5.8 grammes

(New Replacement Value)



#### **Aggregate value for the following items:**

£1,900

Sapphire five stone half eternity ring, claw set with oval cut stones to a 9ct white gold shank, estimated total sapphire weight 1.75cts approximately, hallmarked Birmingham 1981, sponsor's mark S&Co, 2.7 grammes

Similarly set emerald ring, estimated total diamond weight 0.8cts approximately, hallmarked Birmingham 1981, 2.4 grammes

(New Replacement Value)



#### **Single stone diamond ring**

£1,800

round brilliant cut diamond claw set in white precious metal on an 18ct yellow gold shank, with chernier shoulders, estimated total diamond weight 0.41cts approximately  
Assessed colour - H/I  
Assessed clarity - SI  
Hallmarked London 1984, sponsor's mark 'PLTD'  
2.6 grammes

(New Replacement Value)



#### **Opal and diamond cluster earrings**

£1,800

each composed of a diamond stud suspending an oval opal cabochon within a border of sixteen eight-cut diamonds, to unmarked white precious metal mount, valued as gold, opal dimensions 9mm by 7.5mm by 2mm approximately, estimated total diamond weight 0.34cts approximately, 20mm drop  
4.6 grammes

(New Replacement Value)

Reference: 42



**Aggregate value for the following items:**

**£1,800**

Gentleman's Movado stainless steel wristwatch, black circular dial with pierced brick link integrated strap, case No. 84 G2 1883 7349731, case 36mm

Lady's wristwatch en suite, case No. 84 A1 1800 6835333

(New Replacement Value)



**Aggregate value for the following items:**

**£1,700**

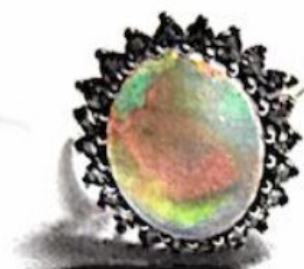
22ct yellow gold wedding band, 6 grammes  
Hallmarked Birmingham 1919, maker's mark J.M

Another slimmer band, hallmarked Birmingham 1975, 3.2 grammes

Platinum wedding band, hallmarked London 1978 3.8 grammes

Another band, with engraved lattice design, unmarked, valued as white gold, 8.3 grammes

(New Replacement Value)



**Opal and diamond cluster ring**

**£1,600**

oval opal cabochon within a border of twenty two eight-cut diamonds, all claw set in white precious metal, 9ct yellow gold shank, opal dimensions 11mm by 9mm by 2.4mm approximately, estimated total diamond weight 0.22cts approximately  
Hallmarked London probably 1965, maker's mark DS & Co 2.9 grammes

(New Replacement Value)



**Tsavorite and diamond half eternity ring**

**£1,500**

four round cut tsavorites and three round brilliant cut diamonds to millegain settings and tapering shank in 18ct yellow gold, estimated total diamond weight 0.3cts approximately, estimated total tsavorite weight 0.6cts approximately  
Hallmarked Birmingham 1989, sponsor's mark B&S 4.3 grammes

(New Replacement Value)





**Remaining unspecified rings**  
(nothing of singular value over £550)

£1,500

(New Replacement Value)

Reference: 47



**Diamond wishbone half eternity ring**

£1,350

set with nine round brilliant cut diamonds claw set to white precious metal and a 9ct yellow gold shank, estimated total diamond weight 0.45cts approximately  
Hallmarked London 1986, sponsor's mark V&C  
1.8 grammes

(New Replacement Value)



**Aggregate value for the following items:**

£1,250

Single row cultured pearl necklace, with six paste set spacers and pearl flowerhead design clasp, pearls 6mm diameter

Single strand freshwater pearl necklace with yellow gold clasp

(all light cream, off-round, some with pink overtones, medium lustre and minor spotting)

(New Replacement Value)



**Aggregate value for the following items:**

£1,250

Mabe pearl ring, 13.5mm pearl collet set with an openwork border of six collet set round brilliant cut diamonds, to 14ct yellow gold mount and shank, estimated total diamond weight 0.06cts approximately, 6.1 grammes

Cultured pearl cluster ring, set with six 5mm diameter pearls around a 6mm central pearl, set with six diamond chips, 9ct yellow gold mount and shank, hallmarks for Sheffield 1986, 4.4 grammes

(New Replacement Value)





**Diamond wishbone half eternity ring**

£1,250

set with seven round brilliant cut diamonds claw set to white precious metal and a 18ct yellow gold shank, estimated total diamond weight 0.4cts approximately  
Hallmarked London 1988, sponsor's mark G&S, stamped SR7655  
2.3 grammes

(New Replacement Value)

Reference: 51



**Diamond crescent shape brooch**

£1,100

set with seventeen graduated round brilliant cut diamonds, to white precious metal carved settings and pierced 9ct yellow gold mount, largest diamond 0.15cts approximately, estimated total diamond weight 0.5cts approximately, hallmarked London 1984, sponsor's mark FRS Ltd, 27mm wide  
7.3 grammes gross

(New Replacement Value)



**Opal and diamond scrollwork brooch/pendant**

£1,100

centred by an oval opal cabochon and an arrangement of seven circular opals and four round brilliant cut diamonds, oval opal tassel below, all claw set to the 18ct yellow gold openwork mount, pin backing and safety chain, estimated total diamond weight 0.32cts approximately, central opal 9mm by 7mm approximately, hallmarked London 1973, maker's mark PSR, 40mm long, 35mm wide  
8.2 grammes

(New Replacement Value)



**Pair of diamond and cultured pearl ear pendants**

£1,100

each composed of a collet set round brilliant cut diamond above another smaller diamond, pear shape openwork surround of round brilliant cut diamonds suspending a pear shape cultured pearl 7mm by 6mm, unmarked white precious metal mounts, peg and butterfly fittings, estimated total diamond weight 0.8cts approximately, 23mm drop  
3.7 grammes gross

(New Replacement Value)

Reference: 54



**Pair of diamond cluster earrings**

£1,000

each with a peg stud above a flowerhead setting of round brilliant cut diamonds to yellow precious metal claw settings, valued as yellow gold, estimated total diamond weight 0.6cts approximately, 5mm diameter  
Stamped 375  
2.5 grammes gross

(New Replacement Value)

Reference: 55



**Diamond and amethyst cluster ring**

£900

central oval cut amethyst within a border of sixteen eight-cut diamonds to white precious metal claws and a 'D' shape 9ct yellow gold shank, amethyst dimensions 11mm by 9mm by 5mm approximately, estimated total diamond weight 0.16cts approximately  
Hallmarked Birmingham 1986, sponsor's mark HAN, stamped RM60  
4.1 grammes

(New Replacement Value)



**Aggregate value for the following items:**

**£900**

Peridot and cultured pearl necklace, with irregular shape pearls and compressed button pearls, with faceted peridot beads and diamante spacers, yellow gold trigger clasp, stamped 375, 520mm long

Another similar necklace, 360mm long

Imitation pearl and peridot bracelet, with yellow precious metal clasp, stamped 9K, 180mm long

Pair of earrings en suite, each with a 7mm diameter cultured pearl tassel, 3.9 grammes

(New Replacement Value)



**Triple row cultured pearl necklace**

**£820**

irregular shape pearls with yellow gold clasp, good lustre with pink overtones

Clasp stamped 14k  
375mm long

(New Replacement Value)

Reference: 58



**Aquamarine line bracelet**

**£800**

collet set with seven oval cut aquamarines with rectangular pierced link spacers, in 9ct white gold, lobster claw clasp, aquamarine dimensions 7mm by 5mm by 3.5mm approximately, 175mm long

Hallmarked Birmingham 1985  
6.1 grammes

(New Replacement Value)



**Pair of 9ct yellow gold oval double panel cufflinks**

**£750**

each with machine engraved design and an opposing panel initialled 'FJF' in script, chain connectors

Hallmarked Birmingham 2007  
14.4 grammes gross

(New Replacement Value)

Reference: 60





**Pair of aquamarine earrings**

£600

peg settings above a claw set pear shape pale aquamarine within illusion bezels, aquamarine dimensions 10mm by 7mm by 4mm approximately, 20mm drop  
9ct gold Birmingham import marks  
3.3 grammes gross

(New Replacement Value)

Reference: 61



**Two amethyst half eternity rings**

£600

one channel set with ten rectangular cut stones to yellow gold mount, the other claw set with seven oval cut stones to 9ct yellow gold shank  
4.2 grammes gross

(New Replacement Value)

Reference: 62



**Pair of mabe pearl and diamond earrings**

£580

each composed of a 14mm diameter mabe pearl set above with a claw set round brilliant cut diamond, set in unmarked white precious metal peg and butterfly fittings, estimated total diamond weight 0.25cts approximately, 22mm drop  
5.7 grammes gross

(New Replacement Value)

Reference: 63



**Pair of 9ct yellow gold double panel cufflinks**

£450

each panel of rectangular canted corner form, one side machine engraved the opposing panel engraved with initials 'FF' in script  
Hallmarks for Birmingham 1982, sponsor's mark HH  
8.4 grammes gross

(New Replacement Value)

Reference: 64





**Gentleman's Tissot Seastar stainless steel wristwatch**  
silver baton numeral dial with date aperture and integrated strap  
Case 35mm diameter

£435

Model discontinued, value of a similar equivalent  
(New Replacement Value)

Reference: 65



**Aggregate value for the following items:**

£270

Cultured pearl half eternity ring, set with seven  
3.5mm diameter pearls to 9ct yellow gold shank  
Hallmarked London 1983, sponsor's mark  
SJ, 2 grammes

Another in similar mount, set with four round  
turquoise cabochons and three 3.5mm diameter  
cultured pearls to yellow gold mount, 1.7 grammes

Another in similar mount, set with seven red coral  
cabochons, to 9ct yellow gold shank, hallmarked  
London 1983, sponsor's mark SJ, 2 grammes

(New Replacement Value)



**Victorian diamond star brooch**

£7,000

twelve point star set throughout with graduated old brilliant cut  
diamonds to silver settings and unmarked yellow precious metal  
mount, with pin backing, largest diamond 0.6cts approximately,  
estimated total diamond weight 4cts approximately, 35mm  
diameter  
7.8 grammes

(Antique Replacement Value)

Reference: 67



**Victorian diamond and cultured pearl brooch/pendant**

£2,800

openwork scrolling quatrefoil design, centred by 6.75mm button pearl, within a floral spray and scallop edge surround set with graduated old brilliant cut diamonds to silver settings, with a later added 7.25mm diameter cultured pearl drop inset with a 2.5mm round brilliant cut diamond, all to yellow precious metal mount, 27mm diameter  
8.8 grammes

(Antique Replacement Value)

Reference: 68



**Diamond and cultured pearl cross-over ring**

£4,600

6mm diameter light cream pearl claw set, and round brilliant cut diamond claw set, with three eight-cut diamond meelees to each shoulder, white precious metal shank, valued as platinum, diamond dimensions 6mm by 3.6mm approximately, estimated total diamond weight 0.8cts approximately

Assessed colour - H/I

Assessed clarity - SI

Stamped 'Plat', maker's stamp W G & S

4.3 grammes

(New Replacement Value)



**Sapphire and diamond three stone ring**

£4,400

central round cut sapphire with an old brilliant cut diamond to either side, all claw set in white precious metal, 18ct yellow gold shank, sapphire dimensions 6.4mm by 3.78mm, estimated total sapphire weight 1.2cts approximately, estimated total diamond weight 0.9cts approximately

Hallmarked Birmingham 1979, sponsor's mark S & Co

4.2 grammes

(New Replacement Value)



**Various yellow gold brooches**  
(nothing of singular value over £800)  
41.2 grammes gross

£2,000

(Secondhand Replacement Value)

Reference: 71



**Mid 20th Century Italian carved shell cameo brooch**  
depicting head and shoulder profile portrait of a woman with  
ringlet hair, within a yellow precious metal mount, stamped '9ct'  
55mm x 40mm, 17.4 grammes

£900

(Secondhand Replacement Value)

Reference: 72



**Moss agate line bracelet**  
collet set with six oval agate cabochons, fancy link spacers, each  
cabochon 14mm by 9mm by 4mm approximately, 180mm long  
9ct gold assay marks for Birmingham 1941  
16.3 grammes

£550

(Secondhand Replacement Value)

Reference: 73



**Turquoise matrix cabochon set line bracelet**  
rectangular pierced design spacer links in 9ct yellow gold, oval  
cabochons 18mm by 9mm, 185mm long  
Hallmarks for Birmingham, sponsor's mark S&Co  
14.9 grammes

£380

(Secondhand Replacement Value)

Reference: 74



**Various unspecified bracelets**  
(nothing of singular value over £300)

**£2,900**

(New Replacement Value)

Reference: 75



**Aggregate value for the following items:**

**£3,600**

Diamond set spiral pendant, set with diamond meleees, unmarked white precious metal mount, and trace link chain stamped 'Tiffany 750', 3.4 grammes gross

Pair of ear studs en suite, 5.2 grammes gross

Model discontinued, value of a similar equivalent  
(New Replacement Value)



**Collection of yellow precious metal chains**  
some hallmarked, others stamped 9CT, 9K, or 375, all valued as 9ct gold  
264.2 grammes gross

**£9,000**

(New Replacement Value)

Reference: 77



**Three gold sovereigns within 9k yellow gold scroll mounts**  
1893, 1900 and 1904  
39.7 grammes

**£1,600**

(Antique Replacement Value)

Reference: 78





**Aggregate value for the following items:**

**£480**

Yellow precious metal three row rope twist bracelet, stamped '9K', 6.4 grammes

9ct yellow gold rope twist bracelet, stamped modern hallmarks, 2.3 grammes

9ct yellow gold flat 'S' link bracelet, modern hallmarks, 3.9 grammes

(New Replacement Value)



Early 20th Century yellow gold curb link bracelet the links part foliate engraved, clasp broken off  
Stamped 9ct  
12.2 grammes

**£460**

(Antique Replacement Value)

Reference: 80



Lady's Omega Constellation 18k yellow gold wristwatch mother of pearl 16mm diameter dial with twelve diamond points, diamond set bezel and integrated yellow gold bracelet with buckle, case No.90142151, engraved 'My Choice' 22mm diameter, 65.1 grammes gross

**£10,440**

(New Replacement Value)

Reference: 81



Lady's Omega Constellation My Choice bi-metal wristwatch mother of pearl 16mm diameter dial with diamond points, with Roman numerals to the bezel, gilt and stainless steel bracelet, case No.90200512  
Buckle stamped 6553/865  
Case 22mm diameter

**£3,110**

(New Replacement Value)

Reference: 82



**Lady's Omega wristwatch**

£2,800

square gilt satin finish dial, 16mm wide, with diamond bezel and an integrated rope twist herringbone link bracelet, in 14k yellow gold

Stamped 14K GOLD, buckle engraved 891346CA

Case 20mm diameter, 19.8 grammes gross

Model discontinued

(Secondhand Replacement Value)

Reference: 83



**Lady's Bueche Girod 9ct white gold cocktail wristwatch**

£1,900

oval white dial with baton numerals, 14mm by 10mm, with twenty brilliant cut diamonds to the bezel, and integrated bark effect brick link tapering bracelet, Swiss lever movement

Buckle hallmarked London 1967

Case 19mm x 15mm, 25.3 grammes gross

Model discontinued

(Secondhand Replacement Value)

Reference: 84



**Gentleman's Rolex Oyster Perpetual Datejust bi-metal wristwatch**

£7,300

white dial with gilt Roman numerals, and Jubilee bracelet

Case 36mm diameter

(New Replacement Value)

Reference: 85